

Sinewave Lab

SLModes

Version 1.0.1

User Manual

Introduction

Thank you for purchasing SLModes. With this software, you can now easily explore the modes and chords of the Major, Melodic Minor and Harmonic Minor scales. Expanding on that notion, there is also a feature that shows you matching modes based on how many notes they have in common.

System Requirements

Operating System: Windows 7 / 8 / 10

Architecture: 32 and 64 bits

RAM: 1GB

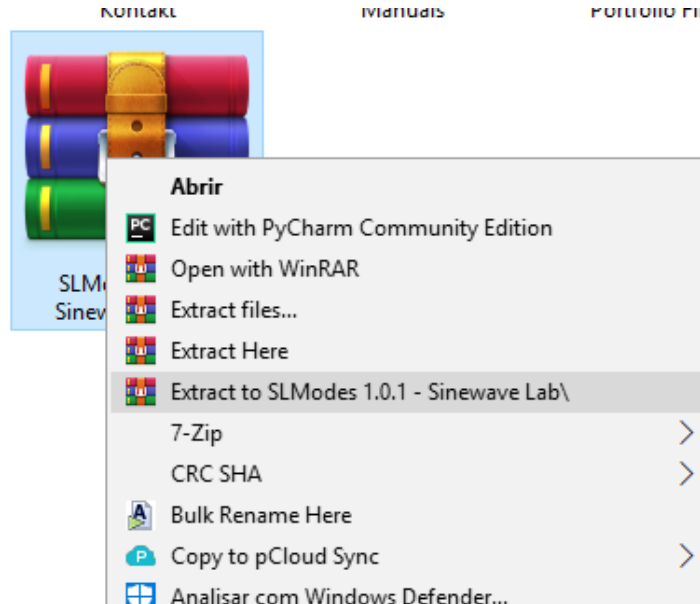
Soundcard: Required for audio playback

Hard-Drive Free Space: 50 MB

Screen Resolution: 960x540

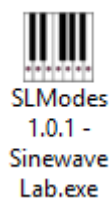
Installation Notes

1. After you download the files you received on your email, you will need to extract the files from the .RAR extension. For this you will need an appropriate software. [We recommend WinRAR](#). Follow the link and download it. **You do not need to buy WinRAR to use it.**



2. Once the extraction is completed, a new folder with the same name of the file is created. You can now delete the file with the .RAR extension if you like. Then open the folder.

3. Once you're inside the folder, find the file called **SLModes 1.0.1 - Sinewave Lab.exe**. This is the file you must run.



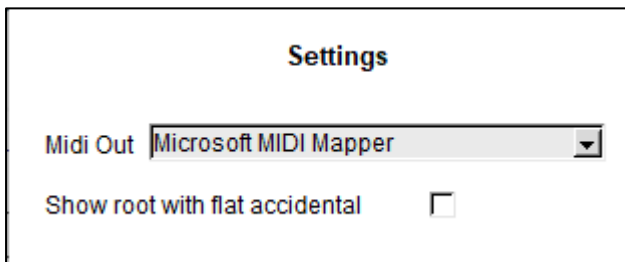
4. Please note: Do not remove the file **SLModes 1.0.1 - Sinewave Lab.exe** from the folder or it may not run! If you want to run it from a more accessible place, such as your desktop, [create a shortcut file](#).

How to Use

The screenshot shows the SL Modes software interface. On the left, a list of modes is shown with 'Melodic Minor' selected (1). Below it, a list of chords is shown with 'Cm' and 'CmM7' selected (3). The main area displays 'Guitar and Piano Patterns' for the selected mode, with notes 'C Eb G B' (4). Below this, a guitar fretboard diagram shows the mode shape (5) and a piano keyboard diagram shows the mode shape (6). The notes of the selected mode are 'C D Eb F G A B' (7). On the right, a list of 'Notes in Common' is shown with '5' selected (8). Below it, a list of 'Notes (Opt.)' is shown with 'A F' selected (9). A list of 'Matching Modes' is shown with 'D Dorian #4' selected (10). Below it, a list of 'Chords' is shown with 'Dm' and 'Dm7' selected (11). The main area displays 'Guitar and Piano Patterns' for the selected mode, with notes 'D E F G# A B C' (15). Below this, a guitar fretboard diagram shows the mode shape (13) and a piano keyboard diagram shows the mode shape (14).

1	Root note of the mode you want
2	Mode name: here you have all the modes of the Major, Melodic Minor and Harmonic Minor scales
3	Shows the most important chords that you can extract out of the selected mode. Double clicking on a chord will playback the chord and the notes of the mode.
4	The notes of the selected chord.
5	Shows the mode shape on a guitar neck.
6	Shows the mode shape on a piano.
7	The notes of the selected mode
8	Number of notes in common: the software will show you a list of matching modes (10) with the exact number of notes in common you choose here.
9	Allows you to filter the matching modes (10) even further by showing only those that have the notes you specify in this field. This field is optional.
10	A list of modes that match with the mode you choose with field (1) and (2), and filtered based on the field (8) and (9). Double clicking on a mode will playback the first chord on the field (11) and the notes of the mode.
11	Shows the most important chords that you can extract out of the selected mode. Double clicking on a chord will playback the chord and the notes of the mode.
12	The notes of the selected chord.
13	Shows the mode shape on a guitar neck.
14	Shows the mode shape on a piano.
15	The notes of the selected mode

Settings



Midi Out: allows you to select a MIDI Port. If you're not getting any sound out of the software, try selecting a different MIDI Port. You will need to have a soundcard installed.

Show Root with Flat Accidental: will show most of the notes with a *d* instead of a #.